

SCHOOL WARDROBE 2011-2012

“Setting a Standard – Focusing on the Inner Person”

Standardized dress can promote unity among students, harmony in the classroom and an orderly, respectful image to the public. Even though we are more concerned about matters of the heart than outward appearance, we believe that a person’s appearance is a reflection of the inner being. Therefore, we have developed an appearance code and a school wardrobe that are based on modesty, cleanliness, neatness and safety. The code applies when a student is on campus, as well as at all school functions. Students must be in compliance from the time they arrive on campus to the time they depart. Deviations from the code must be pre-approved by the administration. The administration will have the final decision should a questionable situation arise.

Only CCS slogans, logos, emblems, and symbols are acceptable on all clothing and outer wear. No athletic wear, spirit wear, t-shirts, tees, super tees or turtlenecks may be purchased from any of the uniform suppliers.

Parents: Please purchase size-appropriate clothing and make allowance for the growth of your child during the school year.

After School Events/Off Campus Dress: Covenant Christian School students are expected to maintain standards of cleanliness, modesty, neatness, and good taste when attending school events both on and off campus. While it is understood that school events, such as athletics contests, are less formal in dress standards than the standards of the classroom, CCS reserves the right to address dress code deviations at CCS functions.

Note to Parents: CCS requests that parents model modesty and appropriateness in dress while on campus. It is extremely important to everyone that parents lead by example.



APPROVED SCHOOL WARDROBE SUPPLIERS

Clothing may be purchased from the following suppliers: Lands’ End School Catalog, Austin Clothing Company School Uniforms (Academy Sports & Outdoors), J.C. Penney School Uniforms (Izod brand), and Wal-Mart School Uniforms (Faded Glory and George). If the approved uniform clothing is not available in local stores, it will be necessary to order from the school uniform catalogues or online at the following websites: landsend.com/school; jcp.com; Walmart.com

SHIRTS & BLOUSES

Any solid colored, long or short sleeved, non-fitted, two-, three-, or four-button polo from the approved suppliers are acceptable. Peter Pan collared blouses must be white or baby blue. All polo and oxford shirts must be tucked in from the time the student arrives on campus until the time the student departs from campus. This requires the student to be able to raise both arms above the head without the shirt becoming un-tucked at the waistband. If an undershirt is worn, it must be plain and tucked in. A white camisole must be worn under the properly buttoned-up blouse. Peter Pan blouses are the only ones that may be worn un-tucked. No t-shirt style, turtleneck style, or johnny-collared shirts may be worn.

OUTERWEAR (COATS, JACKETS, SWEATSHIRTS, & SWEATERS)

All outerwear must be modest, size-appropriate, and not be a distraction. Outerwear may not have any logos, slogans, words, emblems, symbols, etc., with exception of CCS outerwear items.

COATS

Heavier, winter coats may be worn in seasonally appropriate weather.

JACKETS

Many varieties of jackets are acceptable. For example, jackets may be denim, leather, wind-suit type, zippered, fleece, sweatshirt-type, etc. CCS letter jackets may be worn.

SWEATSHIRTS

CCS "hoodies" or similar fleece-type sweatshirts may be worn. Hoods may not be on while the students are in the building.

SWEATERS

All sweaters must be purchased through the Lands' End school uniform clothing line. Acceptable sweaters include all Drifters as well as all Cardigans

No other garment may be worn as outerwear or over wear.

PANTS, CAPRIS, SHORTS, SKIRTS, SKORTS, SCOOTERS, JUMPERS, & DRESSES

School Uniform selections only. To insure modesty and appropriateness, these selections must be sized properly. The length of the skirt, skorts, scooters, shorts, jumpers, or dresses (any color polo dress from Land's End) may be no more than two inches above the top of the knee. No low rise inseams or baggy pants are allowed. All selections must be solid colored (with the exception of the plaid jumpers from Lands' End, and the plaid skirt from Lands' End). Acceptable colors are khaki, olive, navy, black, or gray. Students in grades PK - 6 are not allowed to wear cargo pants or cargo shorts.

BELTS

A belt must be worn with all clothing designed with belt loops. Belts must be made of canvas, leather, or similar type material. Belts must have a buckle. Belts may be solid or patterned. Belts may have designs on them, but their primary color must be black, brown, tan, navy, or white. Suspenders are not acceptable.

SOCKS

Boys must wear socks with all shoes. Girls must wear socks, tights, leggings, or hose with all shoes. Leggings and tights must be plain or a neutral color.

SHOES

All shoes should be enclosed, neat, clean and without holes. Tennis shoes (no cleats or wheels), boots, and dress shoes are acceptable. Girls dress shoes must not have a heel in excess of two inches high. All shoes designed for laces must be worn laced. Clogs, mules, crocs, slippers, sandals are not acceptable.

HEADWEAR

Hats, caps and bandanas are not acceptable (unless part of a school-issued uniform or a school-sanctioned event with prior approval of the administration).

HANDWEAR

No gloves or hand wear / arm wear of any kind may be worn in the building.

HAIR

Hair must be neat, clean, well groomed, and must not be a distraction. Cuts must be modest and in good taste. Hair must not be over the eyes. Hair may be given slight, natural highlights, but may not be changed drastically. Hair may not be dyed. The natural, original color may not be changed. Boys: Hair must be above the collar, above the eyebrows and above the middle of the ear. Shaves, "lines," and mo-hawks are not acceptable. Cuts may not be lower than a size one (1) guard. Boys' faces must be clean-shaven (no facial hair). Sideburns must not extend below the bottom of the earlobe.

JEWELRY

Jewelry should be modest and in good taste. Jewelry is intended to accent one's appearance – not be the main focus. Girls may wear no more than two earrings per ear. No gauging is allowed. Dangling earrings (no longer than 2") may be worn by secondary girls (7th-12th) only. Boys may not wear earrings. Body piercing, body art, body carvings, and tattoos, whether permanent or temporary, are not permitted.

MAKE-UP

Only secondary girls (7th-12th) may wear make-up. It should be natural and worn in moderation. Elementary girls (Pre-K-6th) are not permitted to wear make-up.

CHAPEL DRESS

Elementary: GIRLS (PK - K):

Jumpers: Plaid Jumper in clear blue plaid from Lands' End School

Tops: Woven Peter Pan Blouse, long or short sleeve from Lands' End School, or white IZOD cotton polyester blouse with Peter Pan collar from J.C. Penny.

GIRLS (1ST - 3RD):

Skirts / Skorts: Plaid A-line Skirt in clear blue plaid from Lands End School, or Plaid Pleated Skort in clear blue plaid from Lands' End School.

Tops: Cobalt Interlock Polo Shirt, long or short sleeve, from Lands' End School.

GIRLS (4TH - 6TH):

Skirts: Black skirt or A-line skirt in black from Lands' End School.

Tops: Royal blue shirt or cobalt Interlock Polo Shirt, long or short sleeve, from Lands' End School.

BOYS (PK - K):

Pants / Shorts: Black toddler pull up pants or black elastic-waist Plain- front Chinos Pants or black Pleated Chino Shorts from Lands' End School.

Tops: Royal blue or cobalt Interlock Polo Shirt from Lands' End School.

BOYS (1ST - 3RD):

Pants / Shorts: Black slacks or black Plain-front Chinos Pants from Lands' End School, or black Pleated Chinos Pants or Shorts from Lands' End School, or black Pleated Chinos Pants with reinforced knees from Lands' End School.

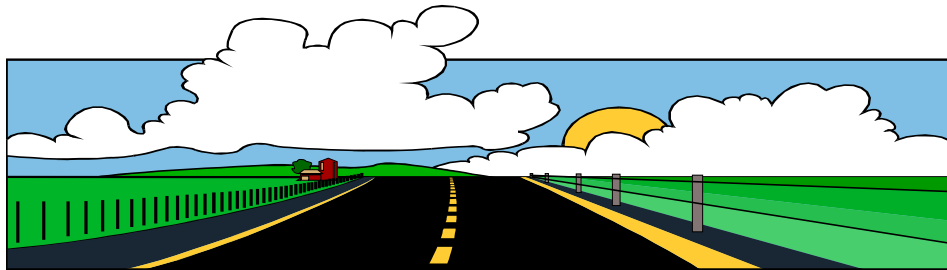
Tops: Royal blue or cobalt Interlock Polo Shirt, long or short sleeve, from Lands' End School.

BOYS (4TH - 6TH):

Pants / Shorts: Black slacks or black Plain-front Chinos Pants from Lands' End School, or black Pleated Chinos Pants or Shorts from Lands' End School, or black Pleated Chinos Pants with reinforced knees from Lands' End School.

Tops: Royal blue or cobalt Interlock Polo Shirt, long or short sleeve, from Lands' End School.

Secondary: (7th – 12th): Because a standard wardrobe has been implemented, the students will not have a special chapel dress. The only items from the uniform selections that are not acceptable for chapel are the shorts and capris.



APPEARANCE CODE for FIELD TRIPS

The same as chapel dress unless the classroom teacher designates otherwise.

OFF-CAMPUS WARDROBE FOR ACSI ACTIVITIES

When participating in ACSI activities the following attire shall be worn as follows, unless otherwise notified:

Elementary: The same as chapel dress unless the classroom teacher designates otherwise.

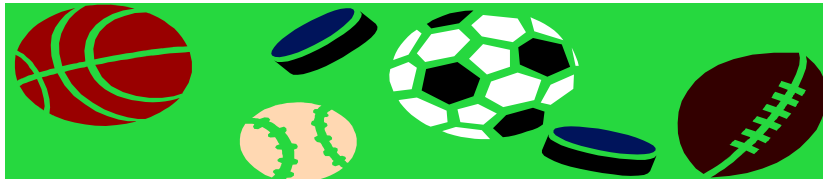
Secondary: The teacher will define the appropriate attire for the event.

CHRISTIAN T-SHIRT DAY

Every Friday will be designated “Christian T-shirt Day”. Students will be allowed to wear a Christian t-shirt and appropriate jeans or dress code shorts or slacks. Jeans must be neat, clean, without holes, cuts, or frays and size appropriate (no low-rise jeans & no skinny jeans). Boys must wear jeans designed for boys.

The spirit of this day is to encourage our students to wear a Christian t-shirt. It is not intended merely as an opportunity to “dress down” by wearing jeans. The opportunity to wear jeans is a privilege that accompanies the student’s desire to identify himself with Christ by wearing a t-shirt that clearly communicates that message. A Christian t-shirt is a shirt that has a Scripture reference, a Bible verse, or a clear Christian message written on it. For 4th - 12th graders, the CCS P.E. shirt, athletic shirt, and sports jersey do not meet the standard to be considered a Christian t-shirt. Christian hoodies that meet the definition of a Christian t-shirt may be worn on Fridays.

Students who have appearance code violations during the week will be ineligible to participate in Christian T-shirt Day. All other appearance code standards apply on Christian T-shirt Day (i.e. shirts must be tucked in; belts must be worn, etc.). Blue jean shorts are not acceptable.



PHYSICAL EDUCATION & ATHLETICS

Elementary/Secondary P.E.: Grades PK–3 do not have a P.E. uniform. P.E. shirts and shorts must be purchased at CCS for grades 4-5. All PE clothing must be of good quality, appropriate size and in good condition (no holes). The PE uniform must be worn during P.E. class. Points will be subtracted if the uniform is not worn and a tally or disciplinary notice could be issued.

Grades 6-8: Whether your child is participating in an athletic sport or physical education class, he/she will be required to wear an approved uniform for class/practice time. This uniform consists of black mesh shorts and a blue t-shirt.

The black mesh shorts can be purchased at Academy, either online or in the store. Here is some helpful information to ensure you are purchasing the correct item:

BCG Boys' Basic Porthole Mesh Shorts (Caviar/Black)		
Item# BAB3003	SKU#0011699212.....	\$5.99
BCG Mens" Porthole Mesh Athletic Shorts (Caviar/Black)		
Item# MAB3006	SKU#0013448717.....	\$7.99
BCG Girls' Basic Porthole Mesh Shorts (Caviar/Black)		
Item# GAB3002	SKU#0011699592.....	\$5.99
BCG Womens' Porthole Mesh Shorts (Caviar/Black)		
Item# WAB3002	SKU#0011733409.....	\$7.99

NOTE: The SKUs are typically based on size SMALL; if purchasing in the store, the last 3 digits of the SKU will vary, depending on the size purchased.

The blue t-shirts can be purchased through the Physical Education Department at Back to School night and throughout the school year.

Secondary Athletics: practice uniform will be determined by the athletics department. Student/athlete will be required to purchase necessary practice apparel and equipment, if not issued by the athletics department. If no specific practice uniform is required, the student/athlete must wear a CCS logo athletic shirt (which can be bought through the athletic department), blue or black shorts, athletic socks and athletic shoes.

CONSEQUENCES FOR NON-COMPLIANCE OF WARDROBE STANDARDS FOR SECONDARY STUDENTS

Secondary students will receive a disciplinary notice, will be assigned a lunch detention to be served at the next lunch period (regardless of the number of cumulative demerits), and will be ineligible for the next scheduled Christian T-shirt day.